



**CHECKERS**

Justrite Safety Group

# YELLOW JACKET SERIES 1-CHANNEL CABLE PROTECTOR

PRODUCT INFORMATION BROCHURE







PICTURED: YJ3-225 IN USE (LEFT)  
YJ5-125-AMS IN USE (TOP)

Checkers™ Cable Management offers the most extensive line of high performance cable/hose protection products in the world. These durable cable protection systems provide a safer method of passage for pedestrian traffic, vehicles and heavy duty equipment while protecting valuable electrical cables, cords and hose lines from damage.

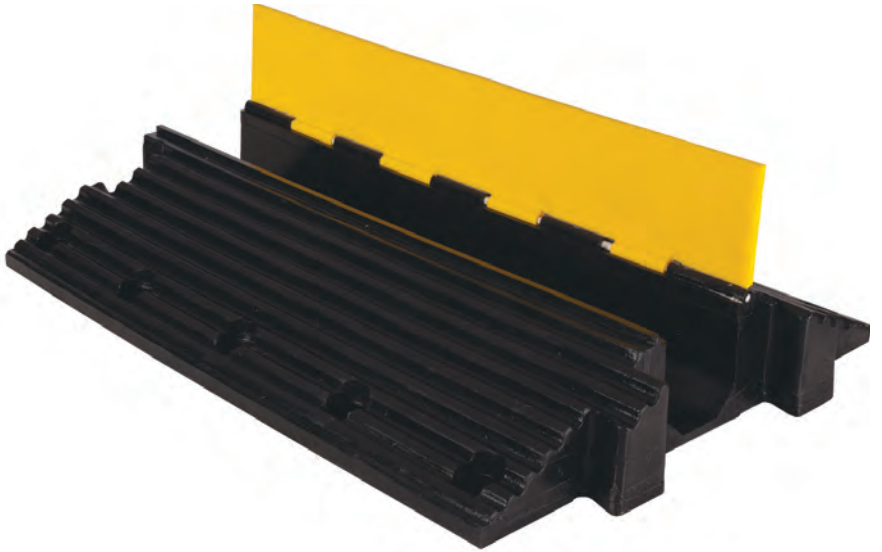
To fit the needs of a wide variety of applications, we offer lidded models, drop over models, open top models, and low profile models constructed from all-weather polyurethane. We also offer rubber duct models for light applications.

- **World's largest cable protector manufacturer**
- **Checkers™ cable management systems are manufactured in the USA in Broomfield, CO**
- **We offer extensive accessories, such as ADA/DDA compliant access ramps, protector bridges, 45 & 90 turns and end caps**
- **Polyurethane construction is lighter and more durable than rubber imitations in extreme weather conditions**
- **Universal safety colors alerting all type of traffic to the product's presence**
- **Satisfies state and federal regulatory agencies**
- **Customized solutions, including logos molded into the product**
- **Multiple channel options so each cable and hose can have its own dedicated channel**
- **Non-conductive material insulates and protects cords/cable, as well as people**

**YELLOW JACKET SERIES 1-CHANNEL CABLE PROTECTORS** with hinged lid protect valuable large electrical cables and hose lines from damage while providing a safer crossing in high volume traffic areas. Modular interlocking design is ideal for extremely heavy duty industrial areas.

**Material:** UV Stabilized Polyurethane

- Protects cables and hoses up to 5.0" outside dia.
- The "original" cable protector
- Dog Bone Connectors to extend to any desired length
- Thick lid and base allow for high volume of traffic
- Hinged lid for easy cable placement
- Features a load capacity of 18,870 lb./Axle (8,518 kg)



MODEL: YJ1-500

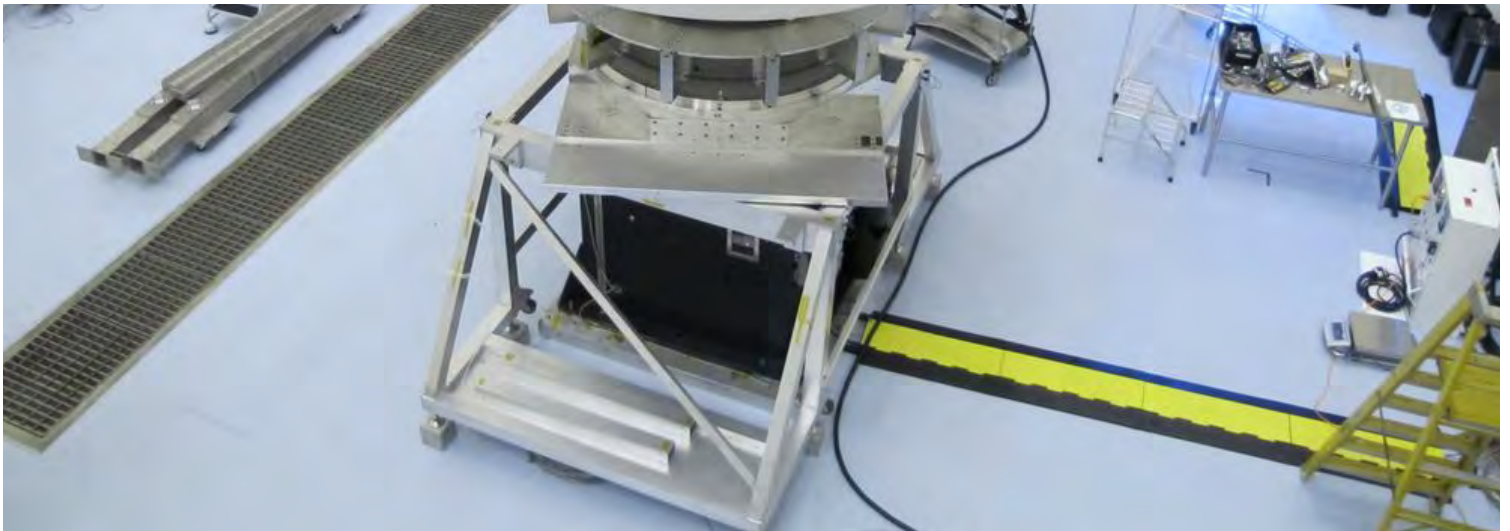
**⚠️ WARNING:** This product can expose you to chemicals including Carbon Black, Titanium Dioxide, Formaldehyde, and Benzyl Butyl Phthalate, which are known to the State of California to cause cancer and birth defects or other reproductive harm. For more information go to [www.P65Warnings.ca.gov](http://www.P65Warnings.ca.gov).

## APPLICATIONS

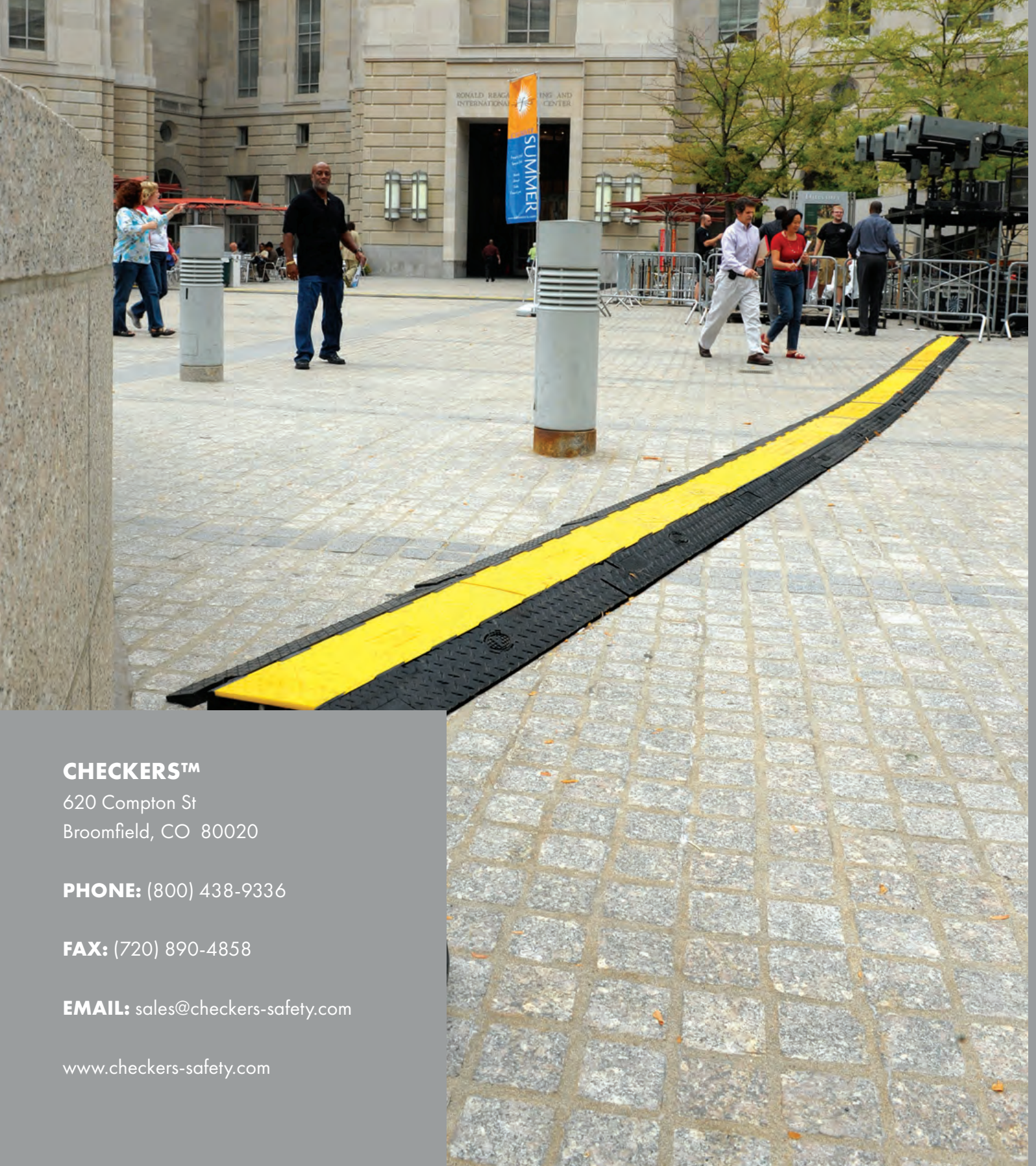
- Civil Engineering and Construction
- Mining
- Industrial
- Infrastructure and Utilities Maintenance
- Heavy Duty
- Oil and Gas

## SPECIFICATIONS

Model	Length	Width	Height	Channel Width	Maximum Outside Diameter	Weight
YJ1-500	36 in. (91.44 cm)	26.75 in. (6795 cm)	5.875 in. (14.92 cm)	5 in. (12.7 cm)	5 in. (12.7 cm)	92 lb. (41.7 kg)







**CHECKERS™**

620 Compton St  
Broomfield, CO 80020

**PHONE:** (800) 438-9336

**FAX:** (720) 890-4858

**EMAIL:** sales@checkers-safety.com

[www.checkers-safety.com](http://www.checkers-safety.com)

A PRODUCT OF:



Justrite Safety Group is the leading source of safety equipment for flammables and hazardous materials storage and handling, asset protection, environmental protection spill containment, absorbents, specialized chemical storage, cable management, safety showers and eye/face washes, matting, and vehicle safety equipment. Learn more at [Justrite.com](http://Justrite.com), [Checkers-safety.com](http://Checkers-safety.com), and [Notrax.com](http://Notrax.com).